



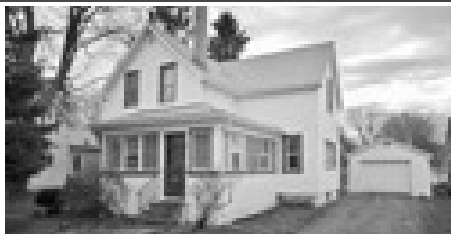
REBECCA WILSON • BILL WILSON • DEBBIE MacDOUGALL • KELLY BAILLIE

"BROKER" "SALES REPRESENTATIVE"



www.22daniel.com

Smiths Falls \$234,900. Currently an investment property with a quality tenant, this century home still holds its charm with all original woodwork and original stained glass. Many upgrades and improvements have been done to property, this would make a stunning family home, great for entertaining or keep as an investment, the choice is yours!



www.302Thomas.com

Kemptville \$299,900. Looking for a home as unique as you are. The warmth and comfort of an older home's charm with comforts of today. New vinyl siding and many new windows, hardwood, softwood flooring with original trim and details. Main floor den/office or 4th bedroom, sunken family room with gas fireplace, remodelled kitchen, main floor laundry.



www.10549Maurice.com

Hallville. \$329,900. Move-in ready, this fantastic 3 bedroom, 2 bathroom home is not a drive by, you will be pleasantly surprised with its large kitchen and long breakfast bar, patio doors from dining room to 2 tiered deck, oversized double car garage with inside entry to kitchen, and a drywalled open lower level for you to bring your own finishing touches.



MERRICKVILLE ESTATES

7 Lots remaining in Phase 1 - Model home construction is underway for this 1800 sq. ft. Devonshire Model, hardwood throughout main living area, ceramic in kitchen and bathrooms with Berber in the bedrooms. This home will be available on lot 17 for \$356,000.



MERRICKVILLE ESTATES

7 lots remaining in Phase 1 - Model Home construction is underway for this 1800 sq. ft. Devonshire Model, hardwood throughout main living area, ceramic in kitchen and bathrooms with Berber in the bedrooms, this home will be available on Lot 12 for \$399,900.



www.46Smith.com

Oxford Station \$399,900. Minutes to the 416 this home is a must see! Impressive oversized principal rooms flooded with natural light, patio doors from dining room lead to rear deck built for entertaining. This 3+2 bedroom home is built for a growing and active family all on over 3 acres.



www.1057IslandView.com

Manotick \$499,900. Water access completely renovated - three bedroom two bath sidesplit, double car garage with inside entry to mud room. Main floor formal living with woodburning fireplace, dining rooms and kitchen, lower level family room with gas fireplace and recreation/games room or den/office.



www.3767mapleshore.info

Waterfront \$679,900. Completely renovated and upgraded this is a spectacular home on 4.8 acres of waterfront property. Mapleshore Estate is a lovely small community of mostly waterfront properties that is family friendly and minutes south of the city.



www.1204Richardson.com

Hobby farm \$699,900. Custom Normerica panel beam home sitting high on over 26 acres, original barn and woodshed remain from original homestead. Wonderful detached garage with extra work space. Partially finished lower level; leaves room to put your own finishing touches and make this house your home.



www.398VanBuren.com

Park View Place Condominiums Unit 103 \$305,379 model F 980 sq. ft. of open living space, 3 storey building with 46 units. One outdoor parking space included.



KEMPTVILLE CONDOMINIUMS

Park View Place Condominiums Unit 204 \$229,690 model C 880 sq. ft. of open living space. One indoor parking space included.

Open houses daily 11 am - 1 pm and weekends 1 pm - 4 pm.

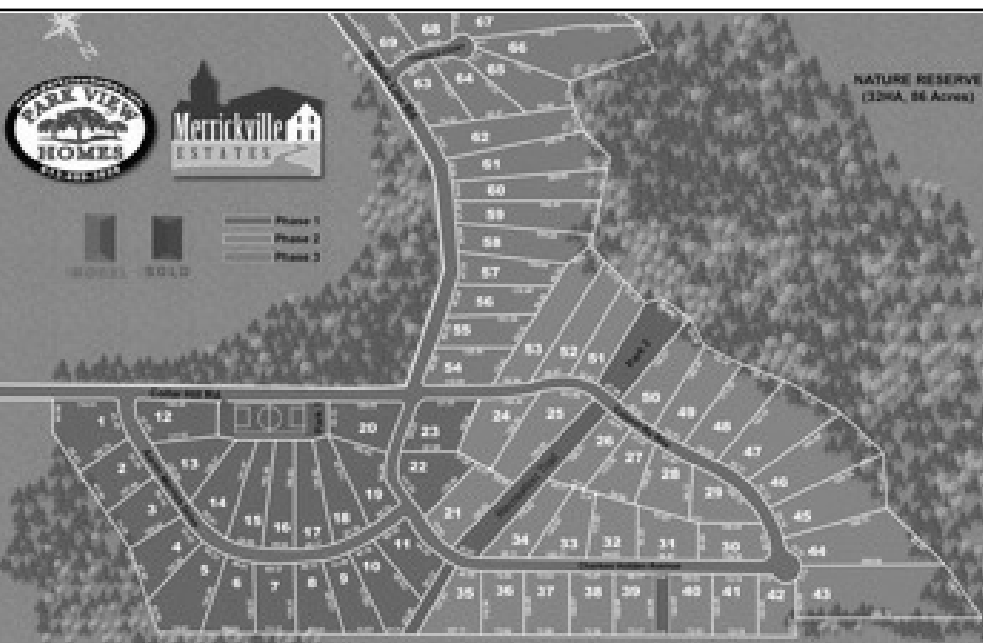
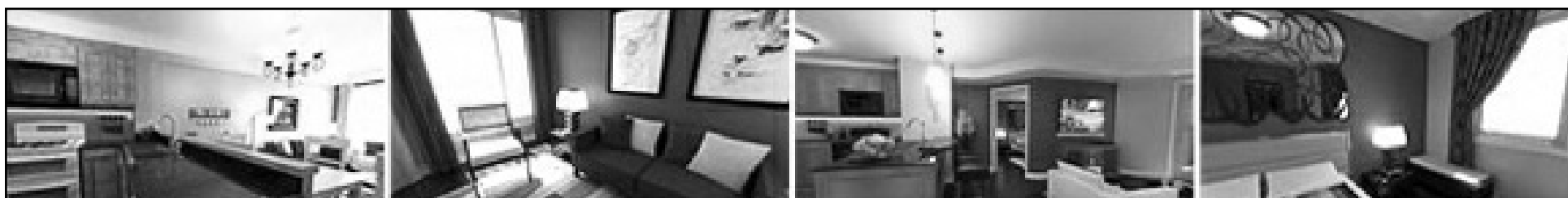
Open houses daily 11 am - 1 pm and weekends 1 pm - 4 pm.



Park View Place Condominiums Kemptville

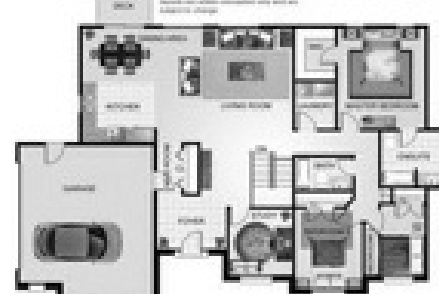
Condos starting from \$214,034

This three storey 46 unit condo building still offers six floor plans left to choose from ranging from 700 sq. ft. to 1110 sq. ft. Each unit includes six appliances, one outdoor parking space with heated indoor parking available as an upgrade. This condo building offers fitness area, meeting room, elevator, all in a close walking distance to all amenities. **Visit us daily 11 AM - 1 PM or weekends 1 - 4 PM.**



Model: Devonshire 1800 sq. ft.

MERRICKVILLE ESTATES



7 lots remaining in Phase 1 with homes starting at 1600 sq. ft. Model home coming soon an 1800 sq. ft. Devonshire Model, 3 bedrooms plus a den, hardwood throughout main living area, ceramic in kitchen and in bathrooms with Berber in bedrooms, open concept kitchen/living room/dining room for \$399,900.